

## **Pinawa, MB**

<http://pinawa.com/>



Pinawa, MB is a small community of 1,445 residents located 110km away from Winnipeg. Set beside the Winnipeg River, the town offers access to boating, kayaking, canoeing, and other water recreational activities. Also nearby is Whiteshell Provincial Park which boasts lovely lakeside cottages. Other attractions in Pinawa include an 18 hole-golf course, beach, outdoor pool, tennis courts, a curling rink, a hockey arena, and kilometers of cross-country ski trails.

### ***Weather***

---

Temperatures in Pinawa range from highs of 25°C in the summer to lows of -25°C in the middle of winter. Typically, the cold season lasts from November to March, and the warm season from May to September.

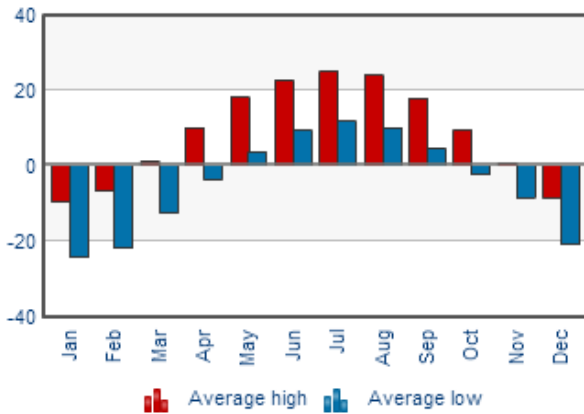


Phone: 1-866-483-5954

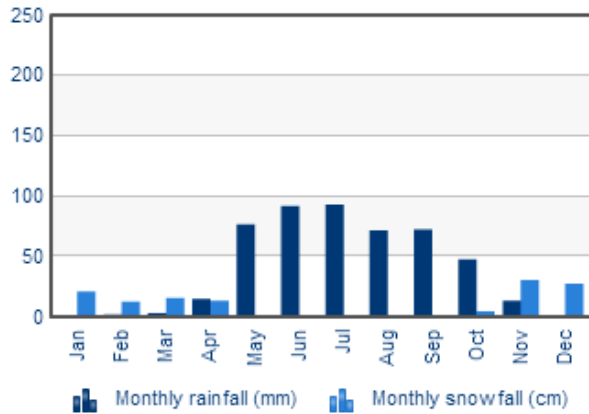
Fax: 1-866-891-4360

Email: [office@redsealrecruiting.com](mailto:office@redsealrecruiting.com)

**Overview: Temperature (°C)** [More stats »](#)



**Overview: Precipitation** [More stats »](#)



[Click here](#) to find out the current weather in Pinawa, MB.

**Location**



Pinawa is located in the southeast of Manitoba. The town is situated on the Canadian Shield within the western boundary of Whiteshell Provincial Park which boasts many rivers, remote lakes, boreal forest and bare granite ridges.

*Driving Distances:*

- Winnipeg, MB.....110km
- Brandon, MB.....335km
- Thompson, MB.....855km



Phone: 1-866-483-5954  
 Fax: 1-866-891-4360  
 Email: office@redsealrecruiting.com

## ***Transportation***

---

### *Air*

[Winnipeg International Airport](#) is the closest airport to Pinawa, located 110km away. The airport offers flights to all over Canada including Vancouver and Toronto as well as flights that connect to international destinations.

## ***Accommodation***

---

The average price for a three bedroom home in Pinawa is \$232, 500. To find current real estate, [click here](#). There are a number of lovely homes located in the nearby Whiteshell provincial park that serves as year round homes or cottages, [find out more here](#).

The average rental price is \$1000 per month. Find current rental listings [here](#).

## ***Education***

---

[The School District of Whiteshell](#) was created specifically to provide superior educational facilities for the children of Pinawa and the surrounding communities. The School District consists of F.W. Gilbert Elementary School (K-6) and Pinawa Secondary School (7-12).

Post-secondary education can be found just outside of Pinawa at [Red River College in Steinbach, MB](#) (124km). This campus offers courses for business, accounting, health care aide and small business management.

## ***Health Services***

---

### [Pinawa Hospital](#)

204-753-2219

PO Box 220, 30 Vanier Drive

Pinawa, MB R0E 1L0



Phone: 1-866-483-5954

Fax: 1-866-891-4360

Email: [office@redsealrecruiting.com](mailto:office@redsealrecruiting.com)

The Pinawa Hospital has an accredited 17 bed acute care hospital and provides health care services to the Town of Pinawa and surrounding area. Care includes: 24 Emergency Room Services, primary health care, mental health services, community cancer program, and X-ray services.

## ***Industry***

---

The economy of Manitoba is a market economy based largely on natural resources. Agriculture, mostly concentrated in the fertile southern and western parts of the province, is vital to the province's economy. Other major industries are transportation, manufacturing, mining, forestry, energy, and tourism.

## ***Recreation***

---

Summer in Pinawa is golfing on the 18-hole golf course, swimming in a heated outdoor pool or at the beach, tuning up on the tennis courts and hiking endless wilderness trails. Winter in Pinawa is a-buzz with so many activities including curling, cross-country skiing, hockey, skating, snowmobiling, ice fishing and snowshoeing.



Pinawa has a fully operating arena that is run by an Arena Board made up of volunteers and councilors. Skating enthusiasts can enjoy family skate and public skate times while hockey tournaments and games are played by a variety of ages including a "senior" team. A highlight in December is the Skate with Santa activity and Jam Can curling in the spring. There is an operational outdoor rink for use by the public winter and summer.



Phone: 1-866-483-5954

Fax: 1-866-891-4360

Email: [office@redsealrecruiting.com](mailto:office@redsealrecruiting.com)

## ***Taxes***

---

Manitobans pay taxes on their income and retail purchases. Extra taxes are collected on fuel and tobacco products.

For detailed information on taxes in Manitoba, visit:  
<http://www.gov.mb.ca/finance/taxation/index.html>

For a list of available tax credits in Manitoba, visit:  
<http://www.cra-arc.gc.ca/tx/ndvdl/tpcs/ncm-tx/rtrn/cmpltng/prvncl/07-eng.html>



Phone: 1-866-483-5954

Fax: 1-866-891-4360

Email: [office@redsealrecruiting.com](mailto:office@redsealrecruiting.com)